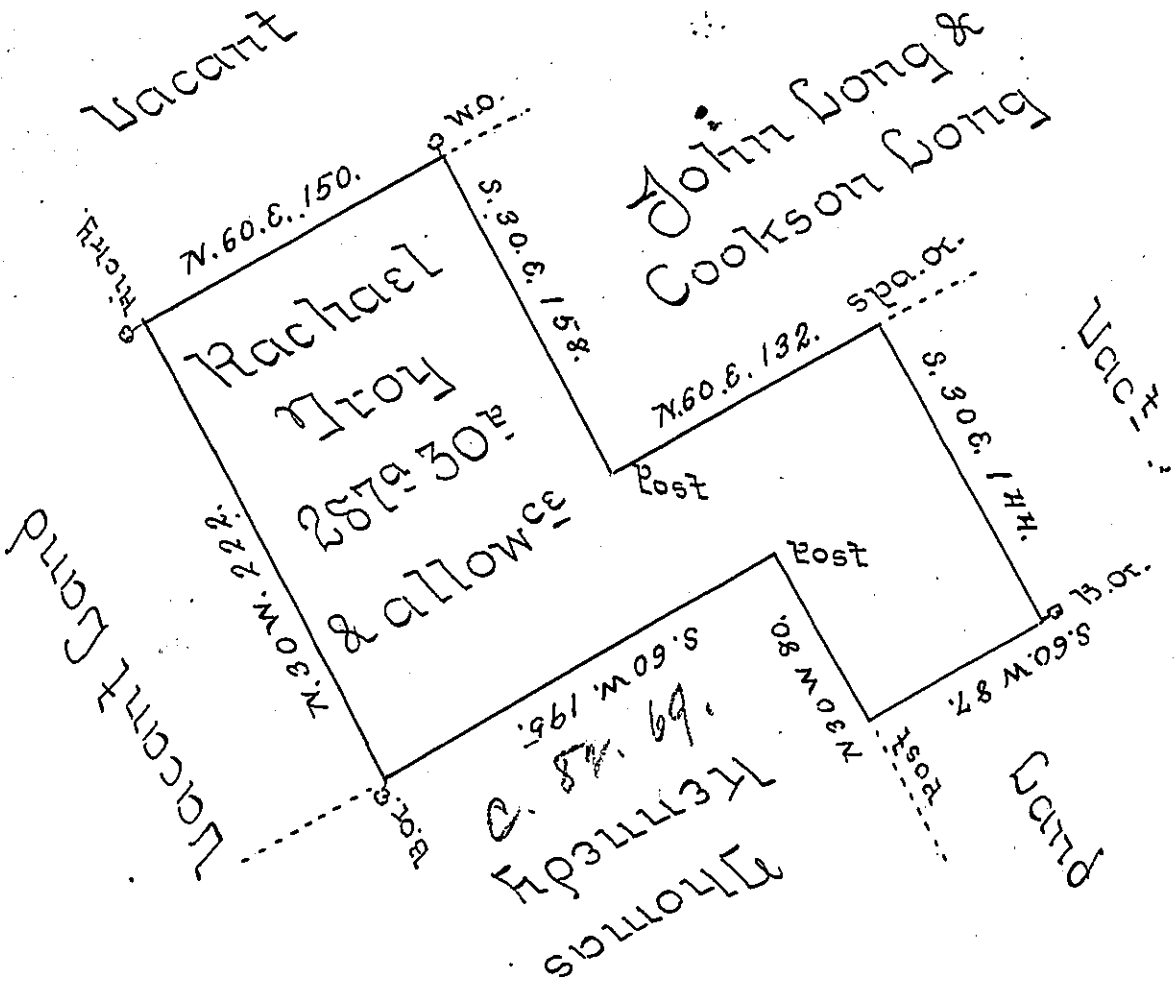


This note attached  
This land is disputed by Doct: Morgan



A Draught of a Tract of Land Called Galesed sit-  
uate on or Near the Waters of Fishing Creek in  
the County of Cumberland surveyed the 25<sup>th</sup> Day  
of October 1769 to Rachael Troy in pursuance  
of her Application & Order of Survey No 5525 -  
Dated the 31<sup>st</sup> day of August 1769. Containing -  
Two hundred & eighty seven acres & thirty per-  
ches & allowance of six Acres Percent &c<sup>a</sup>

Chas Bulkens US

To John Bulkens Esq  
Surveyor General -

IN TESTIMONY that the above is a copy of the original remaining on file in  
the Department of Internal Affairs of Pennsylvania, made  
conformably to an Act of Assembly approved the 16th day of  
February, 1833, I have hereunto set my Hand and caused  
the Seal of said Department to be affixed at Harrisburg,  
this seventh day of February 1905.

*Swac B. Brown*  
Secretary of Internal Affairs.